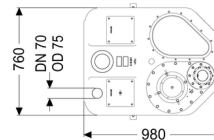
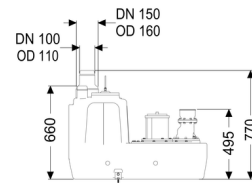
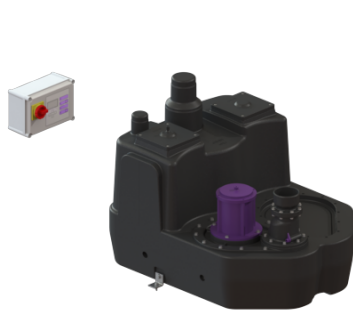


## Lifting stati. Aqualift F XL 200l Mono, SPF 1500-S3



### Article information

Item no.: 11018  
 GTIN: 4026092056851  
 Price group: 50

### Advantages

- Different performance classes available
- Pressure sensor for reliable pneumatic level measurement
- Maximum operating reliability due to intelligent control unit (Duo)

### Description

The lifting station for faecal and faecal-free wastewater is equipped with a submersible pump and a backflow preventer. The collection tank made of permanently resistant polymer (PE) offers universal connection options and has a screwed access cover.

The station is controlled by a user-friendly control unit, which can be optionally integrated in the building management system via a potential-free contact or alarm and collective fault messages can be output via a GSM interface (Comfort control unit).

Type of wastewater: wastewater with sewage  
 Installation situation: free-standing set-up

### Version:

Type of system: Single station  
 Shut-off valve: without shut-off valve  
 Pump control: Control unit  
 Backflow preventer: integrated  
 Sound absorption mat: yes

Delivery state: Installation-ready (electrical components, connection parts must be connected on site)

**General characteristics:**

Colour:	black
Standard:	EN 12050-1

**Dimensions:**

Length:	980 mm
Width:	760 mm
Height:	788 mm

**Tank:**

Number of inlets:	1 ST
Inlet nominal size (DN):	100
Inlet nominal size (OD):	110 mm
Inlet max. scoring (DN):	200 mm
Connection for manual diaphragm pump (DN):	32
Tank volume:	200 l
Pumping volume:	120 l
Pressure pipe connection:	vertical
Pressure pipe connection (DN):	100 mm
Pressure pipe connection (OD):	110 mm
Venting connection (DN):	70 mm

**Pumping device:**

Pump:	SPF 1500
Number of pumps:	1
Max. pumping capacity:	40 m <sup>3</sup> /h
Max. pumping height:	8 m
Operating mode:	S3 - 50 %
Power P1:	1.4 kW
Power P2:	1.1 kW
Speed:	1,415 U/min
Max. temperature (permanent) of conveyed material:	40 °C
Connection type:	Direct connection
Weight:	24 kg
Impeller type:	Multi-vane impeller
Length of mains cable for pump:	5 m
Rated current:	2.7 A
Protection class (pump):	IP 68 (3m/48h)
Protection class:	I
Type of pump connection cable:	H07RN-F 7G 1.5 mm <sup>2</sup>
Temperature monitoring:	integrated

Cos phi - power factor: 0.77  
Insulation class: F

**Control:**

Control unit: Comfort  
Operating voltage: 400 V  
Mains frequency: 50 Hz  
Self-diagnosis system (SDS): yes  
Battery buffering: yes  
Multi-line display: yes  
Log book function: yes  
GSM interface: yes  
Potential-free contact: yes  
Type of fuse required (electrical protection): 3 x C 16 A  
Motor protection switch: yes  
Protection class control unit: IP 54  
Length of mains cable for control unit: 0 m  
Type of level measurement: pneumatic  
Level measurement instrument: Immersion pipe  
Alarm sensor: Immersion pipe