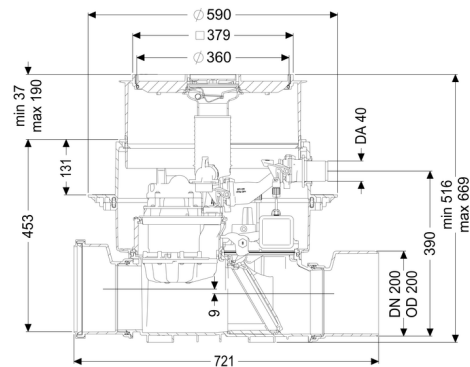
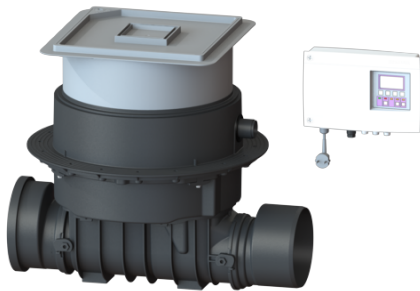


## Backwater lifting station Ecolift DN 200, Floor slab, tileable



### Article information

Item no.: 21200X  
 GTIN: 4026092046876  
 Price group: 20

### Advantages

- Hybrid function: uses the natural fall to the sewer - pump is only used in case of backwater
- Quiet and energy-saving
- Double safety due to backwater flap and pressure pipe

### Description

The backwater lifting station for faecal and non-faecal wastewater is equipped with one pump and one motor-driven closure system.

The pipe cross-section is normally open and the water drains to the sewer via natural fall. Backwater is detected by an optical probe, which causes the motor-driven closure system to close automatically. During the backwater phase, the water drains via a pressure pipe, which carries the wastewater above the backwater level and into the sewer.

Connection hole in the drain body for installation in the ground, incl. seal for pressure pipe and cable conduit.

The station is controlled by a user-friendly control unit, which is optionally integrated in the building management system via a potential-free contact, or alarm and collective fault messages can be output via a GSM interface.

Type of wastewater: wastewater with sewage  
 Installation situation: floor slab installation

### Version:

Odour trap: Multistop  
 Emergency closure: yes

Pump control:	Control unit
Passage seal for conduit pipe (DN):	50 mm
Delivery state:	Pre-mounted for final assembly on site (pumps and sensor system must be fitted on site and control unit must be connected)
Number of motor-driven backwater flaps:	1

#### General characteristics:

Nominal size (DN):	200
Outer diameter (OD):	200
Note on nominal size:	Hydraulics correspond to DN 150
Colour:	black
Approval:	Z-53.2-487

#### Dimensions:

Length:	720 mm
Width:	590 mm
Cutout dimension, length:	750 mm
Cutout dimension, width:	750 mm

#### Tank:

Pressure pipe connection (OD):	40 mm
Installation depth:	486 - 640 mm
Groundwater resistant from lower edge of base section:	3,000 mm
Nominal pressure (PN):	6

#### Drain body:

Socket version:	including spigot and socket
Vertical adjustment:	vertically adjustable upper section

#### Coverage features:

Type of cover:	tileable cover plate
Cover material:	Polymer
Drainage function:	yes
Max. flooring height:	16 mm
Load class:	K 3 (EN 1253-1)
Length:	366 mm

Width: 366 mm  
Locking: Lock & Lift

### Pumping device:

Pump: SPZ 1000  
Number of pumps: 1  
Max. pumping capacity: 11.5 m<sup>3</sup>/h  
Max. pumping height: 10 m  
Operating mode: S3 - 50 %  
Power P1: 1.2 kW  
Power P2: 0.69 kW  
Speed: 2,800 U/min  
Type of fuse required (electrical protection): C 16 A  
Max. temperature (permanent) of conveyed material: 40 °C  
Connection type: coded plug  
Weight: 10 kg  
Impeller type: Macerator  
Length of mains cable for pump: 5 m  
Rated current: 5.2 A  
Protection class (pump): IP 68 (3m/48h)  
Protection class: I  
Type of pump connection cable: H07RN-F 3G 1.0 mm<sup>2</sup>  
Temperature monitoring: integrated  
Cos phi - power factor: 0.97  
Insulation class: F

Vertical drop between inlet and outlet: 9 mm  
Motor type: KSM 140  
Protection class motor: IP 68 (3m/48h)  
Protection class probe: IP 68 (3m/48h)

### Control:

Control unit: Comfort  
Operating voltage: 230 V  
Mains frequency: 50 Hz  
Self-diagnosis system (SDS): yes  
Battery buffering: yes  
Multi-line display: yes  
Log book function: yes  
USB interface: no  
GSM interface: no  
Potential-free contact: yes  
Standby power: 5 W  
Protection class control unit: IP 54  
Length of mains cable for control unit: 1.4 m  
Type of level measurement: optical

Level measurement instrument:  
Alarm sensor:

optical probe  
optical probe