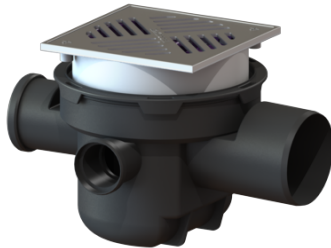


The Universal basement drain DN 100, Stainless steel grating, Backwater protection



Article information

Item no.: 27621
 GTIN: 4026092007839
 Price group: 10

Advantages

- Flexible installation: vertically adjustable upper section rotatable
- tiltable
- vertically adjustable
- standard inlets
- Integrated backwater protection
- Flexible planning thanks to three fixed

Description

The basement drain with three standard inlets (2x DN 50 / 1x DN 70) for faecal-free wastewater is equipped with two mechanical flaps which close automatically in the event of backwater. One flap serves at the same time as an emergency closure to be closed by hand.

Type of wastewater: wastewater without sewage
 Installation situation: floor slab installation

Version:

Odour trap: included
 Emergency closure: yes
 Delivery state: installation-ready
 Backwater protection: Type 5
 Number of mechanical backwater flaps: 2

General characteristics:

Nominal size (DN): 100
 Outer diameter (OD): 110
 Colour: black
 Standard: EN 1253, EN 13564

Dimensions:

Length:	380 mm
Width:	300 mm
Cutout dimension, length:	400 mm
Cutout dimension, width:	320 mm

Tank:

Installation depth:	216 - 266 mm
---------------------	--------------

Drain body:

Socket version:	lateral
Vertical adjustment:	vertically adjustable upper section

Coverage features:

Type of cover:	Slotted cover
Cover material:	304 stainless steel
Colour of cover:	silver
Load class:	K 3 (EN 1253-1)
Sludge bucket:	yes

Grating:

Grid size, width:	187 mm
Grid size, height:	4 mm
Grid size, length:	187 mm