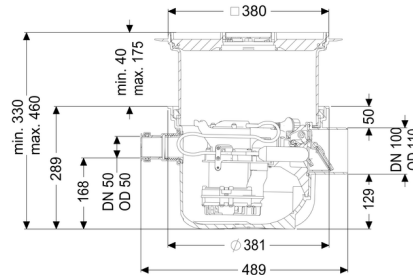
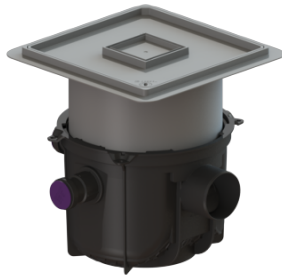


## Backwater pumping station Pumpfix S DN 100, with tileable cover plate



### Article information

Item no.: 280451X  
 GTIN: 4026092085523  
 Price group: 10

### Advantages

- Drains reliably against backwater pressure
- Pump suitable for permanent operation with multi-vane impeller for maximum operating safety
- System suitable for installation in waterproof concrete

### Description

The backwater pumping station for faecal-free wastewater is equipped with one pump and two mechanical backwater valves which close automatically in the event of backwater.

Normally, draining takes place via the natural gradient to the sewer. During the backwater phase, draining takes place via the integrated pump against backwater pressure directly into the sewage channel.

- With vertically adjustable upper section for continuous height and level compensation and integrated floor drain
- System suitable for installation in waterproof concrete, groundwater resistant up to 3 m
- Backwater protection in accordance with EN 13564 type 5
- Including socket DN 50 for inlet and cable conduit
- Pump suitable for permanent operation with multi-vane impeller for maximum operational safety
- Including float switch for level measurement

Type of wastewater:

wastewater without sewage

Version:

Type of waterproofing layer:	Waterproofing layer
Note on installation depth:	System suitable for installation in waterproof concrete
Delivery state:	plug-in ready
Backwater protection:	Type 5
Number of mechanical backwater flaps:	2

### General characteristics:

Nominal size (DN):	100
Outer diameter (OD):	110
Standard:	EN 13564, EN 1253-1

### Dimensions:

Length:	485 mm
Width:	380 mm
Cutout dimension, length:	600 mm
Cutout dimension, width:	600 mm

### Tank:

Inlet nominal size (DN):	50
Connection conduit pipe (DN):	50
Installation depth:	330 - 460 mm
Groundwater resistant from lower edge of base section:	3000 mm

### Coverage features:

Type of cover:	tileable cover plate
Cover material:	Polymer
Colour of cover:	selectable
Drainage function:	yes
Max. flooring height:	16 mm
Load class:	K 3 (EN 1253-1)
Length:	366 mm
Width:	366 mm
Locking:	Lock & Lift

### Grating:

Rim length:	380 mm
Rim width:	380 mm

Shape of upper section: square  
Discharge rate (l/s) with 20 mm backwater: 1.6 l/s

#### **Pumping device:**

Pump: GTF 500  
Number of pumps: 1  
Max. pumping capacity: 10 m<sup>3</sup>/h  
Max. pumping height: 8 m  
Operating voltage: 230 V  
Mains frequency: 50 Hz  
Operating mode: S1  
Power P1: 600 kW  
Power P2: 360 kW  
Speed: 2,800 U/min  
Type of fuse required (electrical protection): C 16 A  
Max. temperature (permanent) of conveyed material: 40 °C  
Connection type: Schuko (earthed contact) 2-pin  
Weight: 6 kg  
Impeller type: Multi-vane impeller  
Length of mains cable for pump: 5 m  
Rated current: 2.7 A  
Protection class (pump): IP 68  
Protection class: I  
Type of pump connection cable: H07RN-F 3G 1.0 mm<sup>2</sup>  
Temperature monitoring: integrated  
Cos phi - power factor: 0.91  
Insulation class: F