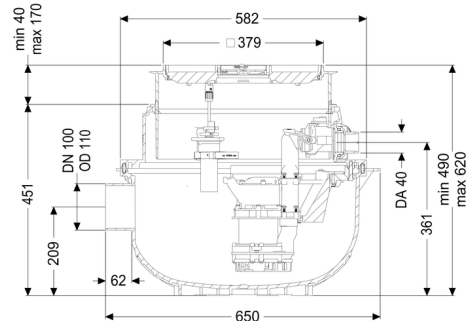


Lifting station Aqualift S Compact Tronic, GTF500, resist., Floor sl., tileable



Article information

Item no.: 280550XC
 GTIN: 4026092082652
 Price group: 20

Advantages

- System resistant to media containing salt and wastewater from water softening units
- Easy retrofitting from Mono to Duo possible
- Quiet operation, as the pump installation does not cause any structure-borne sound emissions.

Description

The ready to plug in lifting station for faecal-free wastewater is equipped with a submersible pump and a backflow preventer. The collection tank made of permanently resistant polymer (PE) has an open pump tank. One-handed closures enable easy removal of the integrated components. The system for installation in the floor slab is preassembled for final installation on site.

The station is controlled optionally by a float switch (Mono) or a user-friendly control unit (Tronic and Duo), which are optionally integrated in the building management system via a potential-free contact or alarm and collective fault messages can be output via a GSM interface.

- with telescopic upper section for continuously adjustable height and level compensation and integrated floor drain
- collection tank made of PE, resistant to aggressive wastewater and 3 m groundwater
- including backflow preventer for the pressure pipe
- including sockets for inlet and cable conduit
- pump with multi-vane impeller for maximum operating reliability

Type of wastewater:

wastewater without sewage

Installation situation:

floor slab installation

Version:

| | |
|---------------------|--|
| Type of system: | Single station |
| Pump control: | Control unit |
| Backflow preventer: | integrated |
| Resistant: | Resistant to saline media, wastewater from water softening systems and wastewater containing condensate from heating systems |
| Delivery state: | Installation-ready (connection parts must be connected on site) |

General characteristics:

| | |
|-----------|------------|
| Colour: | black |
| Standard: | EN 12050-2 |

Dimensions:

| | |
|---------|--------|
| Length: | 617 mm |
| Width: | 585 mm |

Tank:

| | |
|--------------------------------|-------------------------------------|
| Inlet nominal size (DN): | 100 |
| Pumping volume: | 20 l |
| Pressure pipe connection (DN): | 32 mm |
| Pressure pipe connection (OD): | 40 mm |
| Installation depth: | 490 - 620 mm |
| Vertical adjustment: | vertically adjustable upper section |

Coverage features:

| | |
|-----------------------|----------------------|
| Type of cover: | tileable cover plate |
| Cover material: | Polymer |
| Colour of cover: | silver grey |
| Drainage function: | yes |
| Max. flooring height: | 16 mm |
| Load class: | K 3 (EN 1253-1) |
| Length: | 366 mm |
| Width: | 366 mm |
| Locking: | Lock & Lift |
| Free passage: | 10 mm |

Pumping device:

| | |
|--|--------------------------------|
| Pump: | GTF 500 resistant |
| Number of pumps: | 1 |
| Max. pumping capacity: | 10 m ³ /h |
| Max. pumping height: | 8 m |
| Operating voltage: | 230 V |
| Mains frequency: | 50 Hz |
| Operating mode: | S1 |
| Power P1: | 0.6 kW |
| Power P2: | 0.36 kW |
| Speed: | 2,800 U/min |
| Type of fuse required (electrical protection): | C 16 A |
| Max. temperature (permanent) of conveyed material: | 40 °C |
| Connection type: | coded plug |
| Impeller type: | Multi-vane impeller |
| Length of mains cable for pump: | 5 m |
| Rated current: | 2.7 A |
| Protection class (pump): | IP 68 (3m) |
| Type of pump connection cable: | H07RN-F 3G 1.0 mm ² |
| Temperature monitoring: | integrated |

Control:

| | |
|---|----------------|
| Control unit: | Comfort |
| Operating voltage: | 230 V |
| Self-diagnosis system (SDS): | yes |
| Battery buffering: | yes |
| Multi-line display: | yes |
| Log book function: | yes |
| USB interface: | yes |
| GSM interface: | yes |
| Potential-free contact: | optional |
| Protection class control unit: | IP 54 |
| Length of mains cable for control unit: | 1.4 m |
| Type of level measurement: | pneumatic |
| Level measurement instrument: | Immersion pipe |
| Alarm sensor: | optical probe |