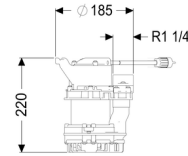
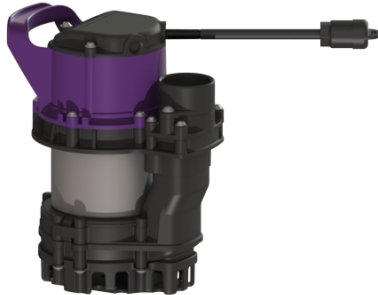


Submersible pump Aquadive GTF 500 resistant, without float switch, 10 m



Article information

Item no.: 280750
GTIN: 4026092082522
Price group: 20

Description

- Submersible pump GTF 500 resistant, for faecal-free wastewater
- housing made of corrosion and acid-resistant polymer/stainless steel
 - resistant to saline media and condensate from condensing boiler systems
 - with longitudinally watertight, moulded connection cable
 - with removable intake cage and carry handle
 - with vertical pressure pipe connection
 - with multi-vane impeller for maximum operating reliability
 - with integrated low-level suction

Type of wastewater: wastewater without sewage

General characteristics:

Material: Polymer
Standard: EN 12050-2

Dimensions:

Length: 185 mm
Width: 120 mm
Height: 220 mm

Pressure pipe connection: R 1 1/4"
Free passage: 10 mm

Pumping device:

Pump: GTF 500
Number of pumps: 1
Max. pumping capacity: 12 m³/h
Max. pumping height: 8 m
Operating voltage: 230 V
Mains frequency: 50 Hz
Operating mode: S1
Power P1: 500 kW
Power P2: 360 kW
Speed: 2,800 U/min
Type of fuse required (electrical protection): C 16 A
Max. temperature (permanent) of conveyed material: 40 °C
Connection type: Schuko (earthed contact) 2-pin
Weight: 6 kg
Impeller type: Multi-vane impeller
Length of mains cable for pump: 10 m
Rated current: 2.5 A
Protection class (pump): IP 68 (3m)
Protection class: I
Type of pump connection cable: H07RN-F 3G 1.0 mm²
Temperature monitoring: integrated
Cos phi - power factor: 0.91
Insulation class: F

Cable length: 10 m