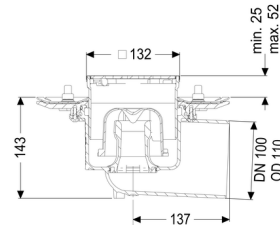


## Practicus floor drain press.seal. DN 100, horizontal, Design grating



### Article information

Item no.: 45119.63  
 GTIN: 4026092034064  
 Price group: 10

### Advantages

- Hygiene: hygienic,
- absolutely corrosion-free and durable material
- Fire protection: combinable with the Fire-Kit for fire and smoke protection
- Sound insulation: outstanding sound insulation effect confirmed by the Fraunhofer Institute

### Description

The Practicus polymer floor drain is used for point drainage and is equipped with a pressure sealing flange as well as a removable odour trap, a lip seal and a temporary protective cover. Including telescopic height-adjustable upper section made of ABS.

The drain meets particular sound insulation requirements in accordance with the measurements of the Fraunhofer Institute in Stuttgart.

The pressure sealing flange with bolts and screws made of stainless steel is used for the clamping or welding of bitumen and polymer bitumen sheets as well as for polymer and elastomer sealing sheets. The outlet socket is suitable for connection to SML cast iron pipes. With connection option for equipotential bonding.

### Version:

System:	125
Odour trap:	included
Waterproofing layer on the upper section:	Connection flange
Waterproofing layer on the drain body:	Press sealing flange (suitable for creating watertight seals)

Sealing water height: 50 mm

### General characteristics:

Nominal size (DN): 100  
Outer diameter (OD): 110  
Standard: EN 1253-1

### Dimensions:

Length: 273 mm  
Width: 273 mm

### Tank:

Number of outlets: 1 ST

### Drain body:

Material of drain body: PP  
Socket version: lateral

Vertical adjustment: vertically adjustable upper section  
Upper section: vertically adjustable

### Coverage features:

Type of cover: Design cover  
Grating design: Kessel  
Cover material: 304 stainless steel  
Colour of cover: silver  
Load class: L 15 (EN 1253-1)  
Length: 120 mm  
Width: 120 mm  
Height: 16 mm  
Surface: ground  
Locking: Lock & Lift

### Grating:

Rim length: 132 mm  
Rim width: 132 mm  
Rim material: 304 stainless steel

Shape of upper section: square

Upper section material: ABS  
Discharge rate (l/s) with 20 mm backwater: 1.5 l/s