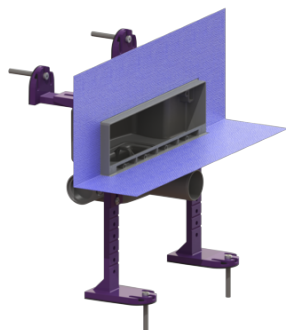


## Drain body, Scada wall drain DN 50, with fixed waterproofing membrane



### Article information

Item no.: 48000M  
 GTIN: 4026092079096  
 Price group: 10

### Advantages

- Award-winning design
- Flexible & convenient installation options

### Description

Used in combination with Scada drain covers, the drain body for Scada wall drains is suitable for indoor wall/floor drainage, is equipped with an odour trap and provides connection options at the front, left and right-hand side.

### Version:

System:	125
Odour trap:	included
Type of waterproofing layer:	Waterproofing layer
Heating:	without
Waterproofing layer on the drain body:	Factory-fitted sealing collar (WaD) according to DIN 18534
Sealing water height:	22 mm

### General characteristics:

Nominal size (DN):	50
Outer diameter (OD):	58

### Dimensions:

Length:	362 mm
Width:	195 mm
Height:	353 mm

### Tank:

Number of outlets: 1 ST

**Drain body:**

Material of drain body: ABS  
Socket version: lateral

**Grating:**

Rim material: ABS  
Upper section material: ABS  
Discharge rate (l/s) with 20 mm backwater: 0.5 l/s