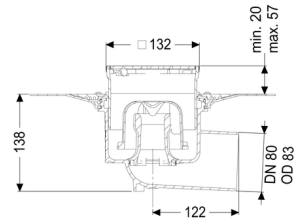
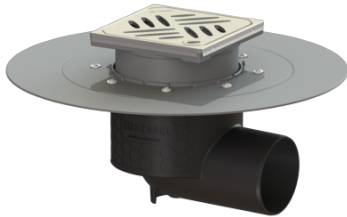


Ecoguss project drain glu. flange DN 80, horizontal, Design cover



Article information

Item no.: 48583.63
 GTIN: 4026092053089
 Price group: 40

Advantages

- High-tech Ecoguss composite material
- Ecoguss, highest fire protection standards
- Scientifically confirmed sound protection effect

Description

The Ecoguss project drain is used for point drainage and is equipped with a glued flange as well as a removable odour trap, a lip seal and a temporary protective cover.

The recyclable composite material Ecoguss meets the highest noise protection requirements, is temperature-resistant, resistant to aggressive media, and has a permanently corrosion-free surface. It is also briefly flammable from 100 to 400 degrees Celsius.

The loose flange is used for clamping polymer and elastomer sealing sheets as well as for cold bitumen seals. The outlet socket is suitable for connection to SML cast iron pipes. Separate equipotential bonding is not necessary.

Version:

System:	125
Odour trap:	included
Type of waterproofing layer:	Waterproofing layer
Waterproofing layer on the upper section:	Connection flange
Waterproofing layer on the drain body:	Adhesive flange (suitable for moisture barriers)
Water exposure class in accordance to DIN 18534-1 (up to and including):	W3-I
Sealing water height:	50 mm

General characteristics:

Nominal size (DN):	80
Outer diameter (OD):	83
Standard:	EN 1253-1

Dimensions:

Length:	348 mm
Width:	348 mm

Tank:

Number of outlets:	1 ST
--------------------	------

Drain body:

Material of drain body:	Ecoguss
Socket version:	lateral
Vertical adjustment:	vertically adjustable upper section
Upper section:	vertically adjustable

Coverage features:

Type of cover:	Design cover
Grating design:	Kessel
Cover material:	304 stainless steel
Colour of cover:	silver
Max. flooring height:	16 mm
Load class:	L 15 (EN 1253-1)
Length:	120 mm
Width:	120 mm
Surface:	ground
Locking:	Lock & Lift

Grating:

Rim length:	132 mm
Rim width:	132 mm
Rim material:	304 stainless steel
Shape of upper section:	square
Upper section material:	ABS

