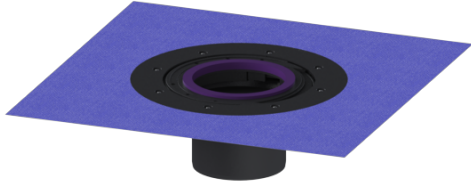


Extension section H: 120 mm, with glued flange



Article information

Item no.: 48900
GTIN: 4026092034620
Price group: 10

Description

Extension section with glued flange for alternative seals, side adjustable for adapting to the tiling pattern, including temporary protective cover

Version:

Seal:	Lip seal
-------	----------

General characteristics:

Material:	ABS
Colour:	grey

Dimensions:

Diameter:	312 mm
Clear width (LW):	125