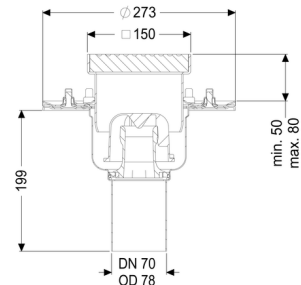
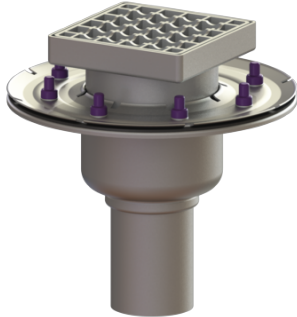


## Ferrofix floor drain pressure sealing flange DN 70, vertical, Slotted grating, SST



### Article information

Item no.: 54210.20  
 GTIN: 4026092056509  
 Price group: 70

### Advantages

- Made of particularly hygienic and mechanically highly resistant stainless steel

### Description

The Ferrofix stainless steel floor drain is used for point drainage and is equipped with a pressure sealing flange as well as a removable odour trap made of stainless steel, a lip seal and a temporary protective cover.

The pressure sealing flange with bolts and screws made of stainless steel is used for the clamping or welding of bitumen and polymer bitumen sheets as well as for polymer and elastomer sealing sheets. The outlet socket is suitable for connection to SML cast iron pipes. With connection option for equipotential bonding.

### Version:

|   |   |
|---|---|
| System:                                   | 125   |
| Odour trap:                               | included  |
| Waterproofing layer on the upper section: | Connection flange   |
| Waterproofing layer on the drain body:    | Press sealing flange (suitable for creating watertight seals) |
| Sealing water height:                     | 50 mm   |

### General characteristics:

|                    |    |
|--------------------|----|
| Nominal size (DN): | 70 |
|--------------------|----|

Outer diameter (OD): 78  
Standard: EN 1253-1

#### Dimensions:

Length: 273 mm  
Width: 273 mm

#### Tank:

Number of outlets: 1 ST

#### Drain body:

Material of drain body: Stainless steel 14301  
Socket version: vertical

Vertical adjustment: vertically adjustable upper section  
Upper section: vertically adjustable

#### Coverage features:

Type of cover: Slotted grating  
Cover material: Stainless steel 14301  
Load class: L 15 (EN 1253-1)  
Length: 138 mm  
Width: 138 mm  
Surface: pickled  
Locking: unlocked

#### Grating:

Rim length: 150 mm  
Rim width: 150 mm

Shape of upper section: square  
Upper section material: Stainless steel 14301