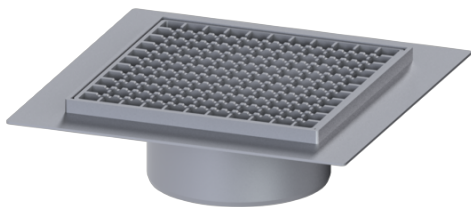


Ferrofix upper section glued flange Sys 200, Slotted grating, 304 SST, 300 x 300 mm



Article information

Item no.: 57415-KF
 GTIN: 4026092095287
 Price group: 70

Advantages

- Made of a particularly hygienic and mechanically highly resistant stainless steel
- Multiple combinations with suitable drain bodies

Description

Used in combination with a drain body of the KESSEL modular system 200, the Ferrofix stainless steel upper section with glued flange is suitable for indoor point drainage.

Version:

System:	200
Type of waterproofing layer:	Waterproofing layer
Waterproofing layer on the upper section: Water exposure class in accordance to DIN 18534-1 (up to and including):	Adhesive flange (suitable for moisture barriers) W3-I

Dimensions:

Length:	400 mm
Width:	400 mm
Height:	112 mm
Vertical adjustment:	vertically adjustable upper section

Coverage features:

Type of cover:	Slotted grating
Cover material:	304 stainless steel
Load class:	L 15 (EN 1253-1)

Height:	15 mm
Locking:	unlocked
Mesh size:	23 x 23 mm

Grating:

Rim length:	300 mm
Rim width:	300 mm
Upper section material:	304 stainless steel