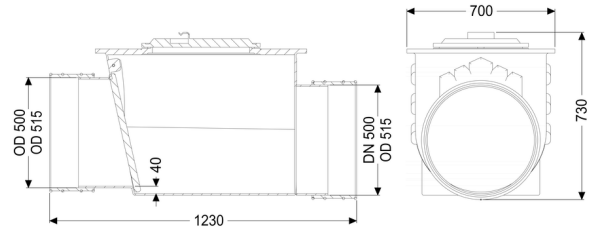
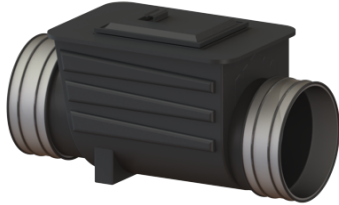


Backwater valve Multitube DN 500, 1 flap



Article information

Item no.: 71500
GTIN: 4026092011638
Price group: 10

Advantages

- Inlet and outlet with pipe clamp
- Bridgeable outer diameter at least nominal width + 20 mm
- Simple maintenance and cleaning

Description

The backwater valve for rainwater is equipped with a mechanical flap which closes automatically in the event of backwater.

Type of wastewater:	wastewater without sewage
Installation situation:	underground installation
Delivery state:	installation-ready
Number of mechanical backwater flaps:	1

General characteristics:

Nominal size (DN):	500
Outer diameter (OD):	515
Note on nominal size:	Bridgeable outer diameter of pipe clamps
Colour:	black

Dimensions:

Length:	1,230 mm
Width:	700 mm
Height:	730 mm

Vertical drop between inlet and outlet:	40 mm
Cover locking:	screwed

