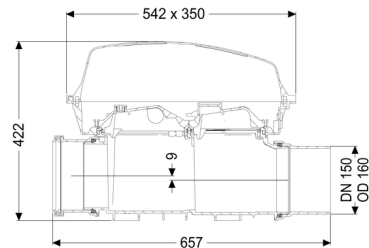
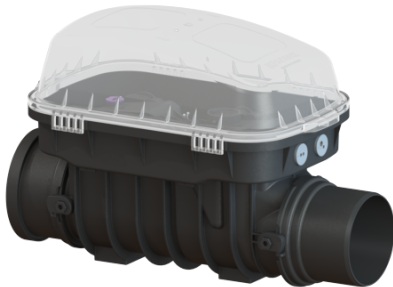


Controlfix clean out DN 150, exposed



Article information

Item no.: 80150
 GTIN: 4026092002704
 Price group: 30

Advantages

- Simple conversion to Staufix SWA
- Staufix FKA or Pumpfix F
- Fast
- toolless access for cleaning
- Available as a complete set or module set

Description

The Premium clean out for faecal and faecal-free wastewater makes easy access to wastewater pipes possible for inspection and maintenance work.

Thanks to the modular KESSEL system, existing systems can easily be converted to a Staufix SWA Premium backwater valve, Staufix FKA or Pumpfix F backwater pumping station.

| | |
|-------------------------|------------------------------------|
| Type of wastewater: | wastewater with and without sewage |
| Installation situation: | exposed drainage pipe |
| Delivery state: | installation-ready |

General characteristics:

| | |
|----------------------|-------|
| Nominal size (DN): | 150 |
| Outer diameter (OD): | 160 |
| Colour: | black |

Dimensions:

| | |
|---------|--------|
| Length: | 486 mm |
| Width: | 350 mm |
| Height: | 422 mm |

Drain body:

Socket version: including spigot and socket

Coverage features:

| | |
|---|------------------|
| Type of cover: | Protective cover |
| Cover material: | Polymer |
| Colour of cover: | transparent |
| Length: | 542 mm |
| Width: | 350 mm |
| Height: | 165 mm |
| Locking: | Clip closure |
| Vertical drop between inlet and outlet: | 9 mm |