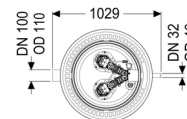
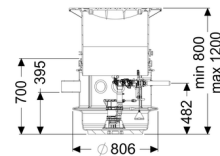
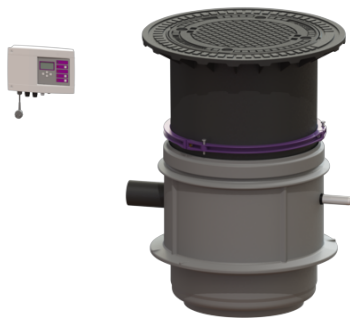


Pumping station Aquapump Medium Duo, GTF 600, 800-1250 mm, B



Article information

Item no.: 824811B
 GTIN: 4026092045152
 Price group: 60

Advantages

- Maximum safety
- Flexible installation
- LW 600 chamber system suitable for underground installation

Description

The pumping station for faecal-free wastewater is equipped with a submersible pump and a backflow preventer. The collection tank is an LW 600 chamber system made of permanently resistant polymer (PE-LLD) with open pump tank and universal connection options. Quick-release closures enable the integrated components to be removed easily.

The station is optionally controlled by a user-friendly control unit, which can be integrated in the building management system via a potential-free contact. Alternatively, alarm and collective fault messages can be output via a GSM interface.

Type of wastewater: wastewater without sewage
 Installation situation: underground installation

Version:

Type of system: Twin pump station
 Installation: Wet installation
 Pump control: Control unit
 Backflow preventer: integrated
 Passage seal for ventilation pipe (DN): 100 mm
 Passage seal for conduit pipe (DN): 100 mm

Delivery state: Modular set for assembly on site

General characteristics:

Colour:	grey
Standard:	EN 12050-2

Dimensions:

Length:	806 mm
Width:	806 mm

Tank:

Number of inlets:	1 ST
Inlet nominal size (DN):	100
Inlet nominal size (OD):	110 mm
Distance pipe bottom inlet to tank bottom:	400 mm
Distance from centre of outlet pipe to tank bottom:	482 mm
Distance from centre of inlet pipe to tank bottom:	455 mm
Connection conduit pipe (DN):	100 mm
Pressure pipe connection:	horizontal
Pressure pipe connection (DN):	32 mm
Pressure pipe connection (OD):	40 mm
Installation depth:	800 - 1,250 mm
Venting connection (DN):	100 mm
Groundwater resistant from lower edge of base section:	2,000 mm
Clear width of tank (LW):	600 mm
Clear width of entry (LW):	600 mm
Chamber system:	LW 600
Vertical adjustment:	vertically adjustable upper section

Coverage features:

Type of cover:	Round cover plate
Cover material:	Grey iron
Colour of cover:	black
Load class:	B 125 (EN 124)
Length:	648 mm
Width:	648 mm
Height:	103 mm
Locking:	unlocked

Pumping device:

Pump:	GTF 600
Number of pumps:	2
Max. pumping capacity:	12 m ³ /h
Max. pumping height:	8 m
Operating voltage:	230 V
Mains frequency:	50 Hz
Operating mode:	S1
Power P1:	0.6 kW
Power P2:	0.36 kW
Speed:	2,800 U/min
Max. temperature (permanent) of conveyed material:	40 °C
Connection type:	coded plug
Weight:	6 kg
Impeller type:	Multi-vane impeller
Length of mains cable for pump:	10 m
Rated current:	2.7 A
Protection class (pump):	IP 68 (3m)
Protection class:	I
Type of pump connection cable:	H07RN-F 3G 1.0 mm ²
Temperature monitoring:	integrated
Cos phi - power factor:	0.91
Insulation class:	F

Control:

Control unit:	Comfort
Operating voltage:	230 V
Mains frequency:	50 Hz
Self-diagnosis system (SDS):	yes
Battery buffering:	yes
Multi-line display:	yes
Log book function:	yes
USB interface:	yes
GSM interface:	yes
Potential-free contact:	optional
Type of fuse required (electrical protection):	C 16 A
Protection class control unit:	IP 54
Length of mains cable for control unit:	1.4 m
Type of level measurement:	pneumatic
Level measurement instrument:	Submersible pressure switch
Alarm sensor:	optical probe