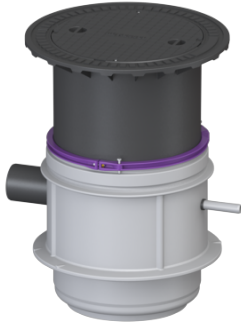


Pumping station Aquapump Medium Duo, STZ 1000, 800-1250 mm, A



Article information

Item no.: 826711A
GTIN: 4026092077672
Price group: 60

Advantages

- height-adjustable upper section

Description

The pumping station for faecal wastewater is suitable for underground installation and is equipped with a non-return flap for the pressure pipe. The PE-LLD tank is resistant to aggressive media and can be delivered with load class A, B or D covers. The pump with macerator ensures maximum operating reliability. The components are pre-assembled for final assembly on site. Including openings for ventilation and cable duct.

Type of wastewater:	wastewater with and without sewage
Installation situation:	underground installation

Version:

Type of system:	Twin pump station
Installation:	Wet installation
Pump control:	Control unit
Backflow preventer:	integrated
Access steps:	no
Passage seal for ventilation pipe (DN):	100 mm
Passage seal for conduit pipe (DN):	100 mm

General characteristics:

Standard:	EN 12050-1
-----------	------------

Dimensions:

Length:	1,000 mm
Width:	806 mm
Diameter:	809 mm
Clear width (LW):	600

Tank:

Number of inlets:	1 ST
Inlet nominal size (DN):	150
Distance pipe bottom inlet to tank bottom:	400 mm
Distance from centre of outlet pipe to tank bottom:	482 mm
Distance from centre of inlet pipe to tank bottom:	475 mm
Connection conduit pipe (DN):	100 mm
Pumping volume:	30 l
Pressure pipe connection:	horizontal
Pressure pipe connection (DN):	32 mm
Pressure pipe connection (OD):	40 mm
Installation depth:	800 - 1,250 mm
Venting connection (DN):	100 mm
Groundwater resistant from lower edge of base section:	2,500 mm
Clear width of tank (LW):	600 mm
Chamber system:	LW 600

Coverage features:

Type of cover:	Round cover plate
Load class:	A 15 (EN 124)

Pumping device:

Pump:	STZ 1000
Number of pumps:	2
Max. pumping capacity:	11.5 m ³ /h
Max. pumping height:	10 m
Operating voltage:	230 V
Mains frequency:	50 Hz
Operating mode:	S3 - 50 %
Power P1:	1.2 kW
Power P2:	0.69 kW
Speed:	2,800 U/min
Type of fuse required (electrical protection):	C 16 A
Max. temperature (permanent) of conveyed material:	40 °C
Connection type:	Schuko (earthed contact) 2-pin
Weight:	10 kg
Impeller type:	Macerator
Length of mains cable for pump:	10 m
Rated current:	5.2 A
Protection class (pump):	IP 68 (3m)

Protection class:	I
Insulation class:	F

Control:

Control unit:	Comfort
Operating voltage:	230 V
Mains frequency:	50 Hz
Self-diagnosis system (SDS):	yes
Battery buffering:	yes
Multi-line display:	yes
Log book function:	yes
USB interface:	yes
GSM interface:	yes
Potential-free contact:	yes
Motor protection switch:	yes
Protection class control unit:	IP 54
Type of level measurement:	pneumatic
Level measurement instrument:	Submersible pressure switch
Alarm sensor:	optical probe