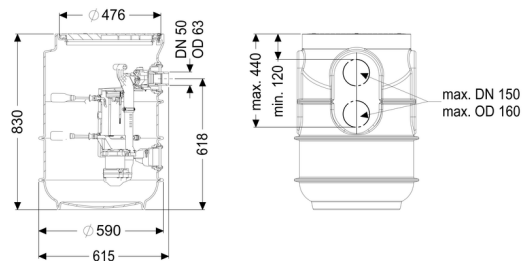


Pumping station Aquapump Small Tronic, Basic, GTF 600



Article information

Item no.: 829811
 GTIN: 4026092092965
 Price group: 20

Advantages

- Including backflow preventer for the pressure pipe
- Including openings for inlet, ventilation and cable duct
- With pedestrian class polymer cover plate

Description

The pumping station for faecal wastewater is suitable for underground installation and is equipped with a backflow preventer for the pressure pipe. The PE tank is resistant to domestic wastewater and includes a pedestrian class polymer cover plate. The pump with multi-vane impeller ensures maximum operating reliability. The components are pre-assembled for final assembly on site. Including openings for inlet.

- tank made of PE, resistant to domestic wastewater
- with a pedestrian class cover plate made of polymer
- including backflow preventer for the pressure pipe
- including openings for inlet, ventilation and cable duct
- pump/s with multi-vane impeller for maximum operating reliability

Type of wastewater: wastewater without sewage
 Installation situation: underground installation

Version:

Type of system: Single station
 Installation: Wet installation
 Pump control: Control unit
 Backflow preventer: integrated

Delivery state: Pre-mounted for final assembly on site (pumps and sensor system must be fitted on site and control unit must be connected)

General characteristics:

Colour: black
Standard: EN 12050-2

Dimensions:

Length: 590 mm
Width: 590 mm
Height: 830 mm

Tank:

Inlet max. scoring (DN): 100 mm
Pumping volume: 60 l
Pressure pipe connection (DN): 50 mm
Pressure pipe connection (OD): 63 mm
Installation depth: 830 mm

Coverage features:

Type of cover: Round cover plate
Colour of cover: black
Length: 615 mm
Width: 600 mm
Locking: lockable

Free passage: 30 mm

Pumping device:

Pump: GTF 600
Number of pumps: 1
Max. pumping capacity: 12 m³/h
Max. pumping height: 8 m
Operating voltage: 230 V
Mains frequency: 50 Hz
Operating mode: S1
Power P1: 0.65 kW
Power P2: 0.4 kW
Speed: 2,750 U/min
Type of fuse required (electrical protection): C 16 A

| | |
|--|--------------------------------|
| Max. temperature (permanent) of conveyed material: | 40 °C |
| Connection type: | coded plug |
| Weight: | 6 kg |
| Impeller type: | Multi-vane impeller |
| Length of mains cable for pump: | 10 m |
| Rated current: | 2.9 A |
| Protection class (pump): | IP 68 (3m) |
| Protection class: | I |
| Type of pump connection cable: | H07RN-F 3G 1.0 mm ² |
| Temperature monitoring: | integrated |
| null: | 260 mm |
| null: | 160 mm |
| Insulation class: | F |

Control:

| | |
|---|--------------------------------|
| Control unit: | Basic |
| Operating voltage: | 230 V |
| Mains frequency: | 50 Hz |
| Self-diagnosis system (SDS): | yes |
| Battery buffering: | yes |
| Potential-free contact: | optional |
| Motor protection switch: | yes |
| Protection class control unit: | IP 54 |
| Connection type: | Schuko (earthed contact) 2-pin |
| Length of mains cable for control unit: | 1.45 m |
| Type of level measurement: | mechanical |
| Alarm sensor: | Float switch |