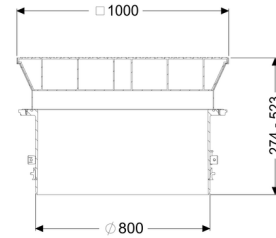
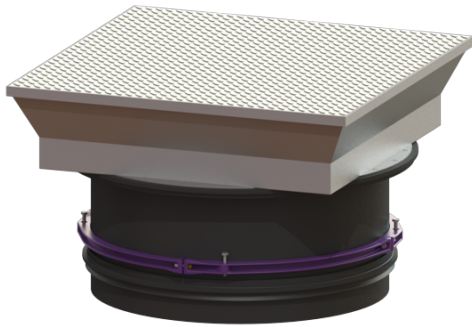


## Upper section with cover plate LW 800, Class B



### Article information

Item no.: 8740179  
 GTIN: 4026092070451  
 Price group: 60

### Description

Upper section for continuous height and level compensation for chamber module LW 1000, consisting of a flush-to-ground cover for setting in concrete, with inner joints, all-round frost- and weather-proof seal, gas spring as an opening aid incl. self-effective arresting device. Suitable for taper with 800 mm access.

### General characteristics:

Material:	Polymer, Stainless steel
Colour:	black

### Dimensions:

Clear width (LW):	800
Adjustment range:	274 - 523 mm

### Coverage features:

Load class:	B 125 (EN 124)
Surface:	Stainless steel
Locking:	screwed