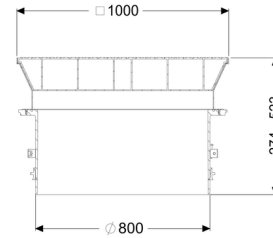
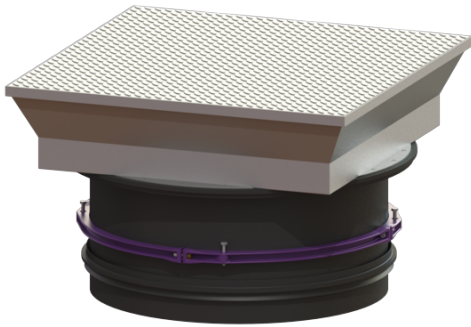


## Upper section with rectangular cover plate LW 800, Class D



### Article information

Item no.: 8740180  
 GTIN: 4026092070468  
 Price group: 60

### Description

Upper section for continuous height and level compensation for chamber module LW 1000, consisting of a drive-over, flush-to-ground cover for setting in concrete, with inner joints, all-round frost- and weather-proof seal, gas spring as an opening aid incl. self-effective arresting device. An all-round concrete ring must be prepared on site. Suitable for taper with 800 mm access.

### General characteristics:

Material: Polymer, Stainless steel  
 Colour: black

### Dimensions:

Clear width (LW): 800  
 Adjustment range: 274 - 523 mm

### Coverage features:

Load class: D 400 (EN 124)  
 Surface: Stainless steel  
 Locking: screwed

