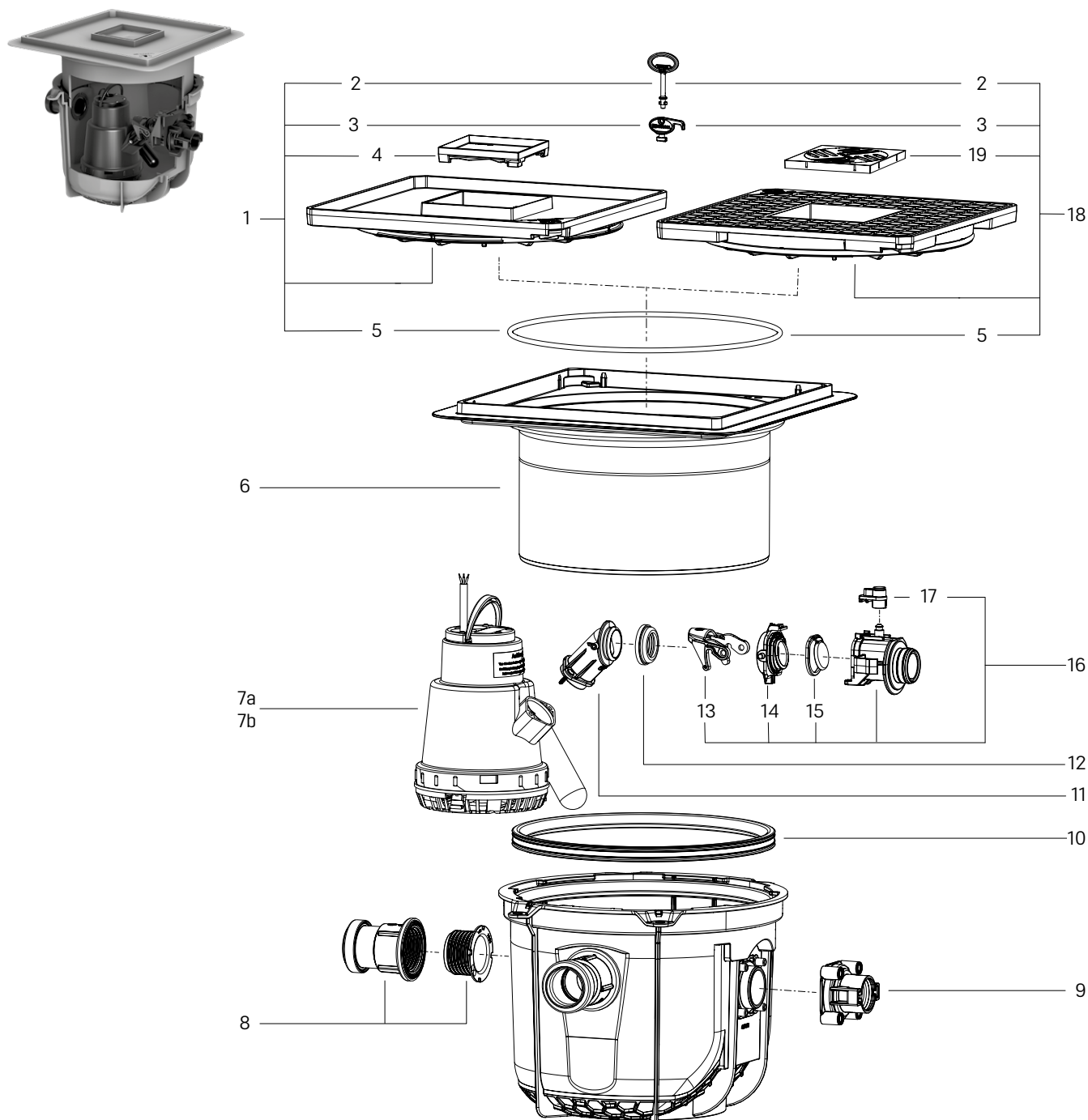


Lifting station *Minilift S*

Installation in the floor slab, beginning model year 03/2019



Item	Designation	Art. no.	Item	Designation	Art. no.
1	Cover plate, tileable, with drain, stone grey, with seal	830 054	10	Lip seal System 330 mm	686 115
2	Release key for <i>Lock & Lift</i> cover plates	67 007	11	Pressure pipe connection	680 759
3	Release key for <i>Lock & Lift</i> insert gratings	680 702	12	Seal for pressure pipe connection	680 067
4	Drain cover, tileable, <i>Lock & Lift</i> , ABS	680 224	13	One-handed closure for backflow preventer	680 018
5	Seal for cover plate, System 330 mm	686 114	14	Pump connection	680 760
6	Upper section, d: 300 mm, height up to 170 mm	830 061	15	Seal for pump coupling with flap	680 475
7a	Replacement pump KTP 300	28 836	16	Flap housing, Mono, with pump connection	680 761
7b	Replacement pump KTP 300 resistant	680 955	17	Turn fastener for pump connection lock	680 762
8	Inlet connection made of polymer Ø 50	39 005	18	Cover plate, black, with slotted grating and seal	830 053
9	Pressure pipe connection with screws	680 758	19	Slotted insert grating, 138 × 138 mm, polymer	60 101S