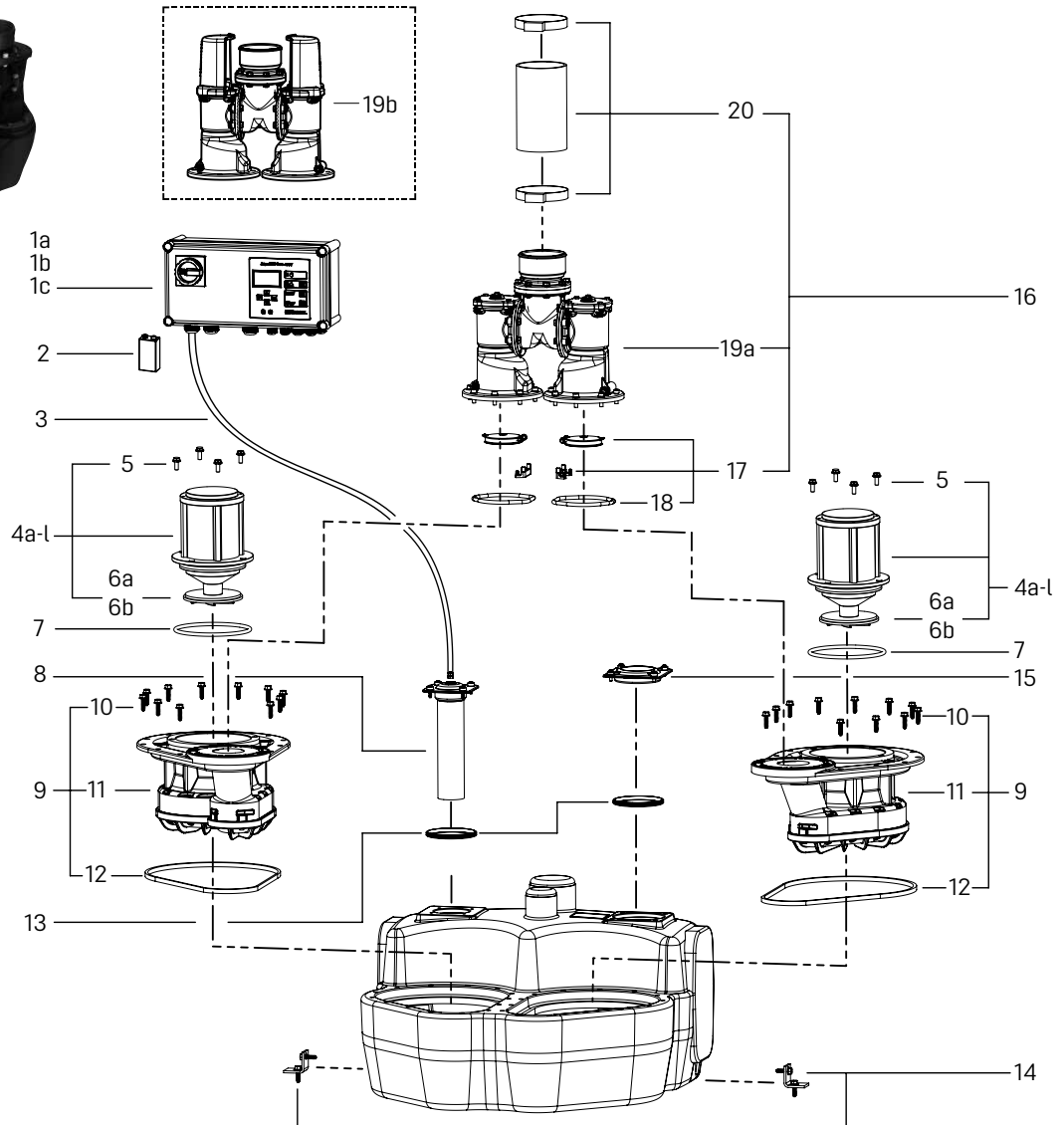


Lifting station *Aqualift F Duo*

Free-standing installation, beginning model year 04/2013



Item	Designation	Art. no.
1	Control unit	
1a	Comfort <i>Aqualift Duo</i> , 400 V, 2 × 2.5 – 4.0 A, for SPF 1500	28 757
1b	Comfort <i>Aqualift Duo</i> , 400 V, 2 × 4.0 – 6.3 A, for SPF 3000	28 758
1c	Comfort <i>Aqualift Duo</i> , 230 V for SPF 1400	28 746
2	Battery, 9 V block	680 034
3	Pressure hose, 6 × 4 mm, 100 natural (sold by the metre)	680 071
4	Motor with impeller	
4a	SPF 1400, S3, 230 V, with capacitor, 5 m cable	28 029
4b	SPF 1400, S3, 230 V, with capacitor, 10 m cable	680 218
4c	SPF 1400, S1, 230 V, with capacitor, with 5 m cable	28 066
4d	SPF 1400, S1, 230 V, with capacitor, with 10 m cable	680 219
4e	SPF 1500, S3, 400 V, 5 m cable	28 028
4f	SPF 1500, S3, 400 V, 10 m cable	680 098
4g	SPF 1500, S1, 400 V, 5 m cable	28 065
4h	SPF 1500, S1, 400 V, 10 m cable	680 445
4i	SPF 3000, S3, 400 V, 5 m cable	28 027
4j	SPF 3000, S3, 400 V, 10 m cable	680 221
4k	SPF 3000, S1, 400 V, 5 m cable	28 064
4l	SPF 3000, S1, 400 V, 10 m cable	680 532

Item	Designation	Art. no.
5	Bolt set for pump	28 609
6	Impeller	
6a	for SPF 1400 / 1500, for <i>Aqualift</i> lifting stations	680 643
6b	for SPF 3000, for <i>Aqualift</i> lifting stations	680 642
7	Flange seal for SPF 1400 – SPF 4500	680 052
8	Pressure sensor for <i>Aqualift F</i> and <i>S Duo</i> , 5 m cable, beginning 01/2010	680 056
9	Replacement pump flange set, <i>Aqualift F</i>	28 051
10	Screw set, galvanised (14 ea.)	680 047
11	Pump flange SPF 1400 – SPF 4500	680 050
12	Pump flange seal, <i>Aqualift F</i>	680 045
13	Seal set for <i>Aqualift F</i>	28 608
14	Attachment bracket with screws (2 ea.)	680 046
15	Cleaning cover, screwed, 160 × 140 mm	680 044
16	Flap housing with pressure hose, Ø 110	28 677
17	Flap set with rolling ring seal, flap and flap holder	680 053
18	Rolling ring Ø 125	680 002
19a	Flap housing for Duo systems, without shut-off valve	680 061
19b	Flap housing for Duo systems with two shut-off valves	680 419
20	Flexible coupling Ø 110, for pressure pipes made of PE, 2 hose clamps	28 663