

Bathroom drain *Classic* with twin sealing flanges

System 100



Type Tested and Monitored
www.tuv.com
ID 111124461

EN 1253-1

Made in ABS, with removable odour trap, sealing water height 50 mm, with fixed lip seal. Drainage capacity 0.8 l/sec flow rate. Installation area 260 × 180 mm

With *Variofix* shallow bed upper section in ABS, with glue flange and counter flange, with non-mounted waterproofing membrane according to EN 1253-1 and DIN 18534-1-W3-I, with two sealing strips

Cover:

Slotted cover 95 × 95 mm in stainless steel AISI 304, for tile thickness 6 – 14 mm, class K 3



Illustration shows Art. no. 40 159.50

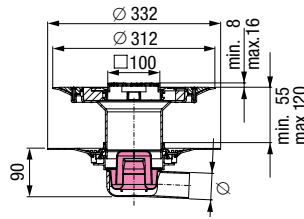


Illustration shows Art. no. 40 159.50

Lateral outlet

Outer diameter Ø (mm)	Art. no.
Ø 50	40 159.50
Ø 75	40 179.50

Vertical outlet

Outer diameter Ø (mm)	Art. no.
Ø 50	40 259.50
Ø 75	40 279.50

Bathroom drain *Classic* with glue flange

System 100



Type Tested and Monitored
www.tuv.com
ID 111124461

EN 1253-1

Made in ABS, with removable odour trap, sealing water height 50 mm, with fixed lip seal. Drainage capacity 0.8 l/sec flow rate. Installation area 180 × 180 mm

With upper section in ABS, with glue flange and counter flange

Cover:

Slotted cover 100 × 100 mm in stainless steel AISI 304, class K 3



Illustration shows Art. no. 40 250.90

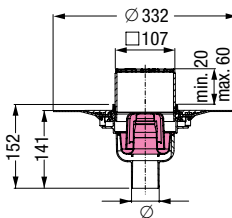


Illustration shows Art. no. 40 250.90

Lateral outlet

Outer diameter Ø (mm)	Art. no.
Ø 50	40 150.90
Ø 75	40 170.90

Vertical outlet

Outer diameter Ø (mm)	Art. no.
Ø 50	40 250.90
Ø 75	40 270.90