

Grease separator *EasyClean* free Direct NS 15 – 50

for free-standing installation



EN 1825

Tank

Manufactured from virgin, non-recycled polyethylene, for free-standing installation in frost-protected areas, with integrated sludge trap and sloped base for fast and clean disposal, with two domed covers made of polymer, with quick-release closures, sealed odour-tight, with suction device installed for the joint disposal of contents of sludge trap and grease separator chamber, intake pipe 75 mm OD PN 10 in accordance with DIN 2501, Storz-B coupling R 2 1/2 for connection to the disposal vehicle.

Inlet and outlet Ø 200 / 250 mm for the connection to PE-HD pipes according to DIN 19537, HT pipes according to DIN 19560, PP or AS.

Disposal System

Direct version with factory installed pressure pipe suction outlet - requires disposal truck with vacuum system for separator disposal, disposal is completely odour free.

Delivery: System completely assembled.

➤ **Accessories:** Inspection window and refill inlet, sampling chamber; lifting stations see chapter "3", pages 361 – 363

➤ **Technical note:** page 360

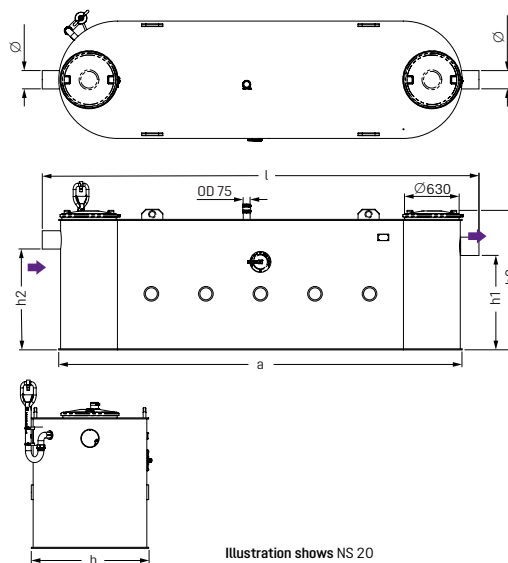


without *SonicControl*

NS Art. no.

Without accessories

NS 15	93 015-06-D
NS 20	93 020-06-D
NS 25	93 025-06-D
NS 30	93 030-06-D
NS 35	93 035.01/D
NS 40	93 040.01/D
NS 50	93 050.01/D



NS	Ø (mm)	a (mm)	Installation dimension l × b (mm)	h1 (mm)	h2 (mm)	h3 (mm)	Sludge trap (l)	Water and grease (l)	Grease storage (l)	Total (l)
15	200	3400	3755 × 1280	1130	1200	1625	1500	2020	600	3520
20	200	4400	4760 × 1280	1030	1100	1625	2000	2230	800	4230
25	200	4780	5140 × 1280	1030	1100	1625	2500	2050	1000	4550
30	250	4700	5160 × 1280	1170	1240	1625	3000	2250	1200	5250
35	250	6000	6480 × 1500	1130	1200	1662	3500	4500	1400	8000
40	250	6200	6680 × 1600	1130	1200	1662	4000	5000	1600	9000
50	250	6200	6680 × 1800	1350	1420	1882	5000	6200	2240	11200

Ø = Outer diameter

